

BROOKLINE
DRISCOLL SCHOOL EXPANSION

School Building Advisory Committee
Design Subcommittee
May 4, 2020



Agenda

1. Acoustics
2. Balconies & Stairs
3. Project Areas
4. Materials
5. Exterior Lighting
6. Historical Artifacts

Agenda

1. Acoustics



Acoustics

1. Room acoustics

- Finishes, shaping

2. Sound isolation

- Walls, floors, ceilings, doors, windows

3. Mechanical systems noise and vibration control

- Indoors: Equipment selection, duct sizing, vibration isolation
- Outdoors: Community noise

Acoustics: Room Acoustics



Learning Space	Maximum reverberation time for 500, 1000, and 2000 Hz (s)
Core learning space with enclosed volume (<10,000 ft ³)	0.6
Core learning space with enclosed volume (>10,000 ft ³ and ≤ 20,000 ft ³)	0.7

Acoustics: Sound Isolation

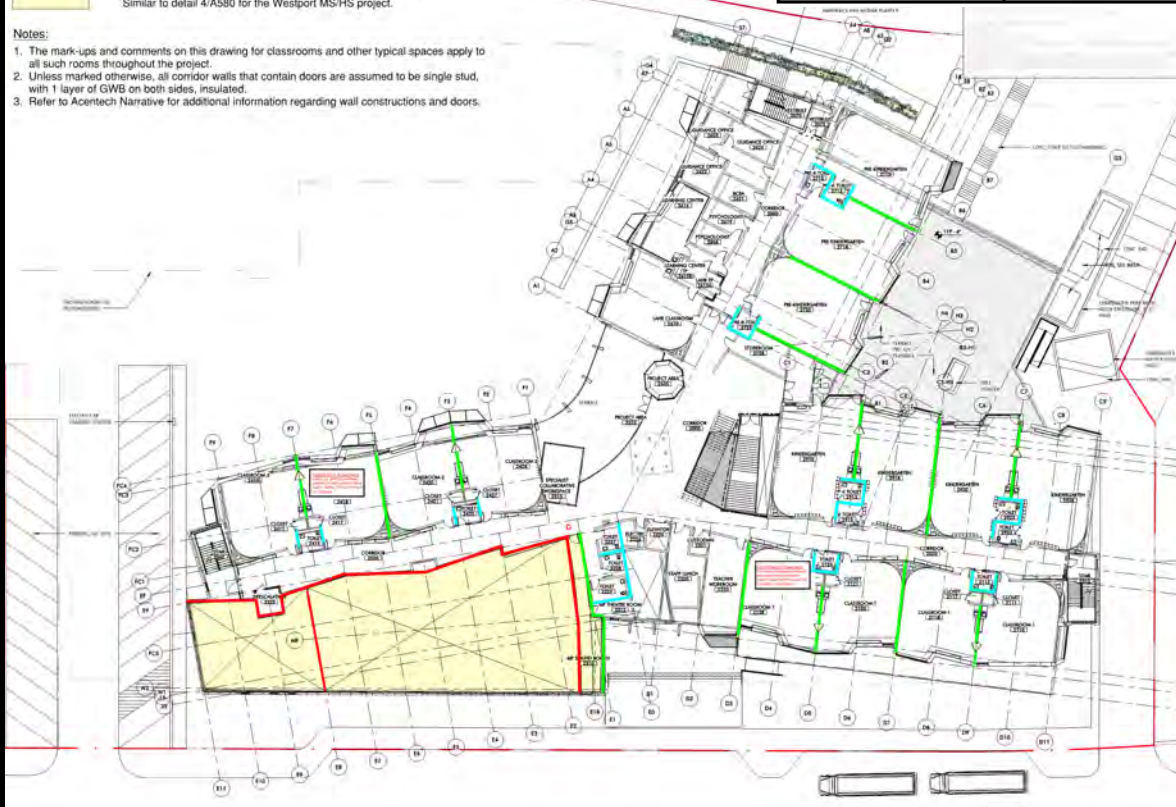
ACOUSTICS LEGEND

- STC 60 – Double stud, 2 layers GWB on outer faces, insulated, no contact between the 2 rows of studs
- STC 53 – Staggered studs, 2 layers GWB on outer faces, insulated
- STC 50 – Single row of studs, 2 layers GWB on both sides, insulated.
- STC 45 – Single row of studs, 1 layer GWB on one side 2 layers on the other, insulated.
- G** – Gaskets – Full-perimeter gaskets - head, jamb, door bottom (and astragal where needed)
- GWB sound barrier ceiling to protect classrooms and other sensitive spaces located above music and other loud rooms. Similar to detail 4/A580 for the Westport MS/HS project.

Notes:

1. The mark-ups and comments on this drawing for classrooms and other typical spaces apply to all such rooms throughout the project.
2. Unless marked otherwise, all corridor walls that contain doors are assumed to be single stud, with 1 layer of GWB on both sides, insulated.
3. Refer to Acentech Narrative for additional information regarding wall constructions and doors.

Spaces Adjacent to Core Learning Rooms			
Other core learning space, speech clinic, health care room and outdoors	Toilet Room	Corridor, staircase, office, conference room not containing a door	Music room, mechanical room, cafeteria, gymnasium
STC 50	STC 53	STC 45	STC 60



Acoustics: Mechanical Noise Control

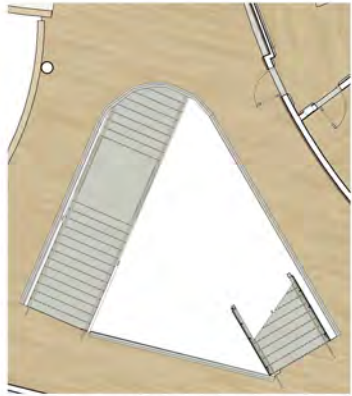
Brookline: Noise from new equipment cannot exceed 10 dB above existing ambient noise conditions.



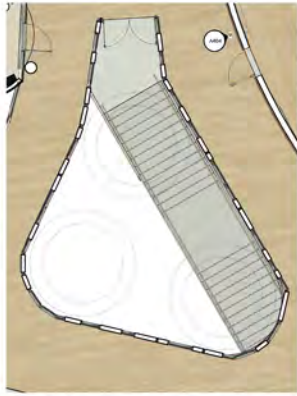
Agenda

1. Acoustics
2. Balconies & Stairs

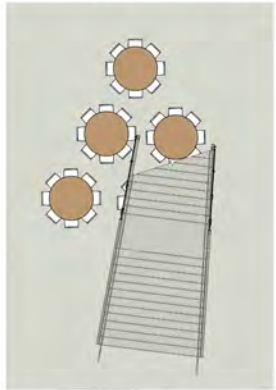




THIRD FLOOR



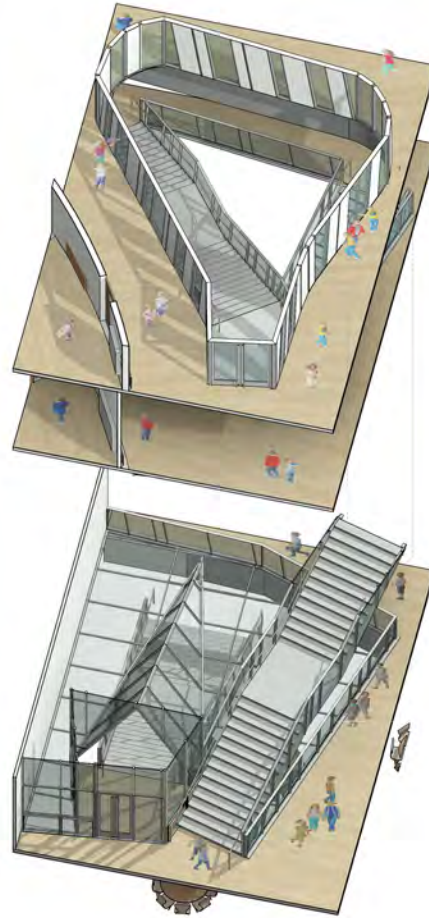
FOURTH FLOOR



FIRST FLOOR



SECOND FLOOR



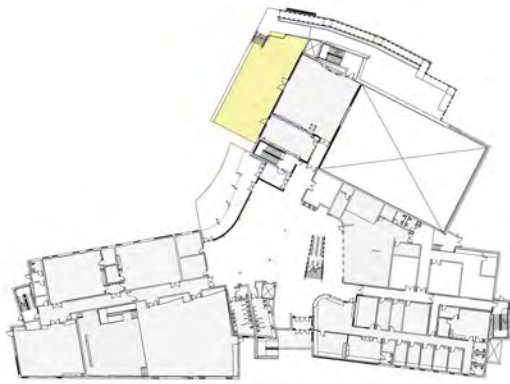
CENTRAL STAIRCASE PLANS AND 3D VIEWS

0' 4' 8' 16' 32'

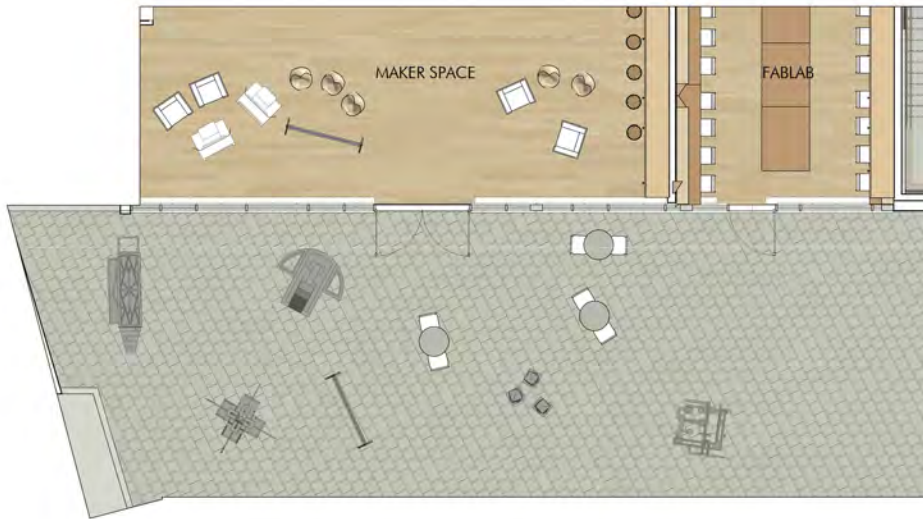
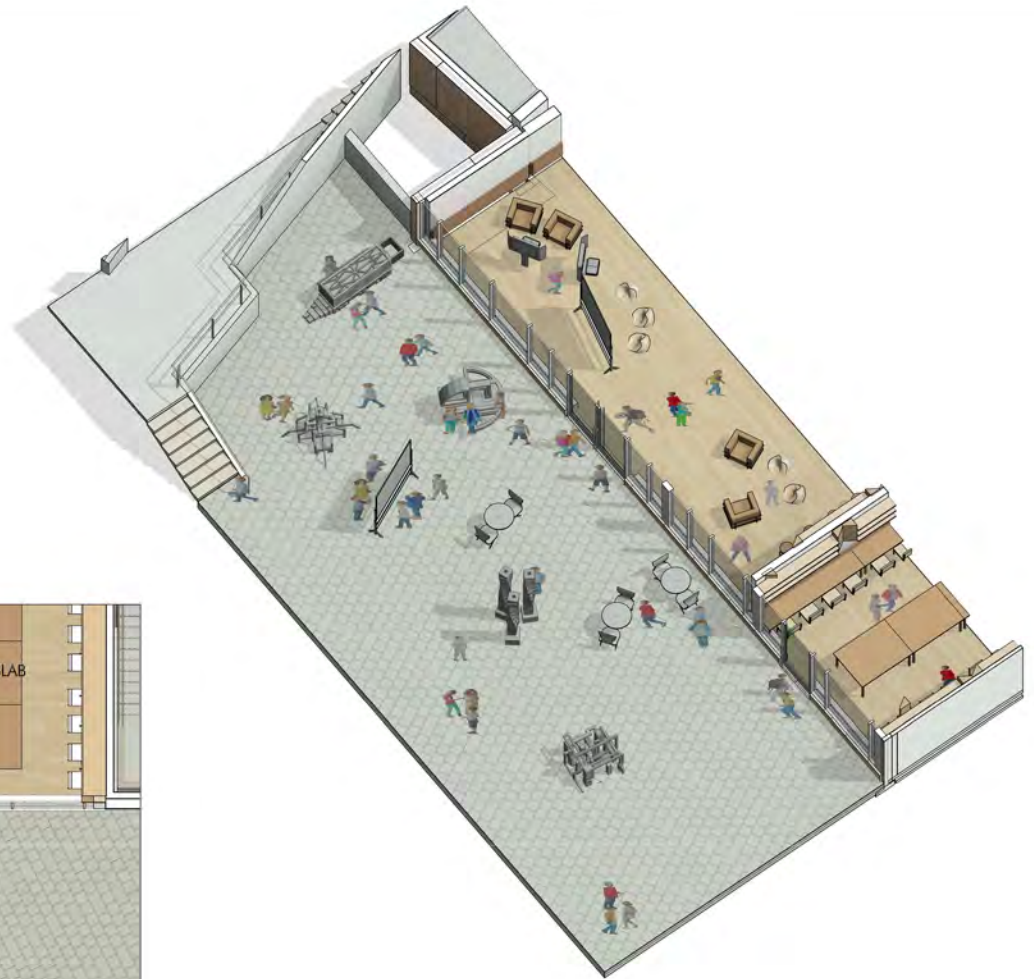
Agenda

1. Acoustics
2. Balconies & Stairs
3. Project Areas





FIRST FLOOR REFERENCE PLAN

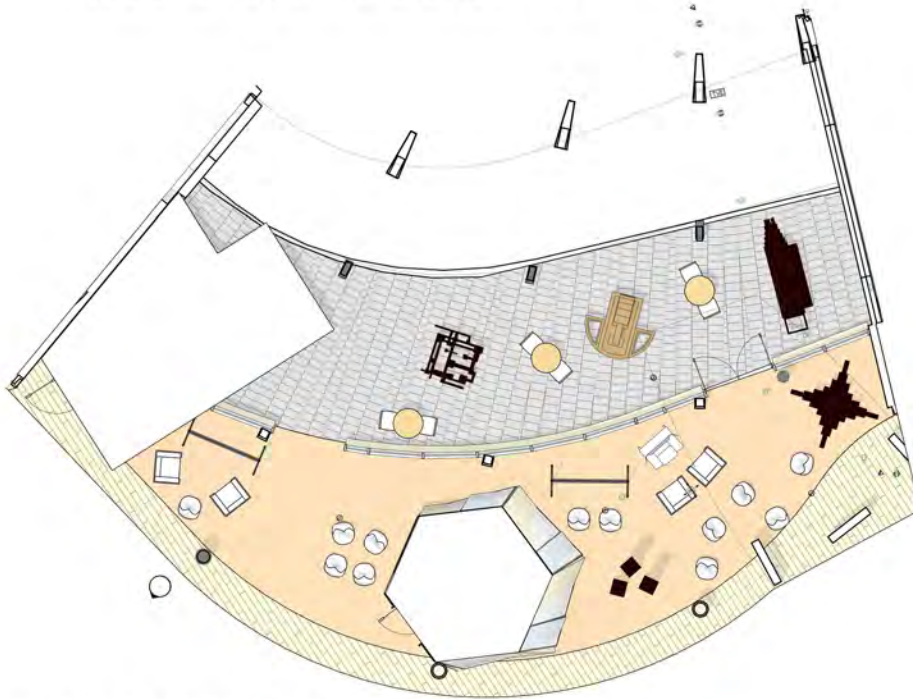


MAKER SPACE/FABRICATION LAB PROJECT TERRACE

TERRACE AREA = 1990 SF



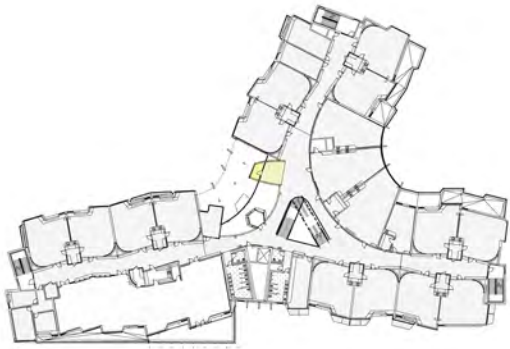
SECOND FLOOR REFERENCE PLAN



INTERIOR/EXTERIOR COLLABORATION ZONE
OPTION A



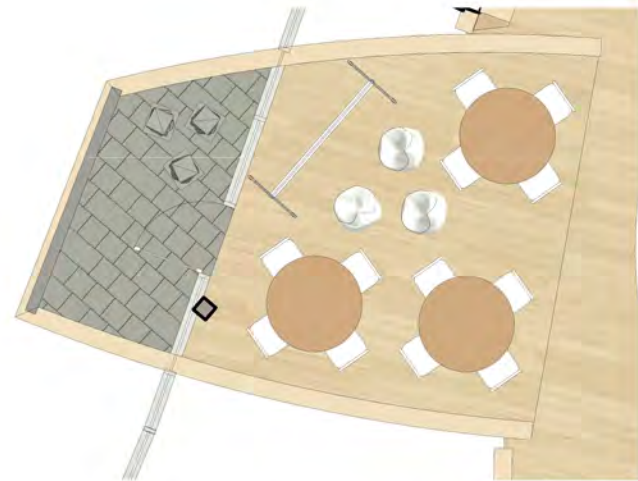
INTERIOR PROJECT SPACE = 755 SF



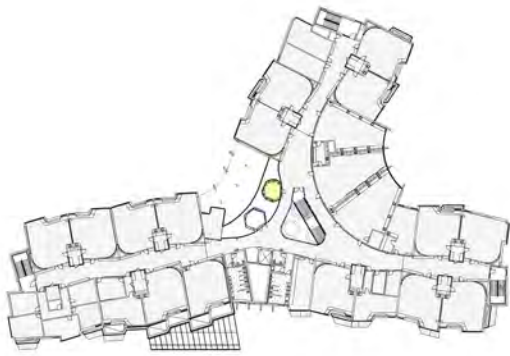
3RD FLOOR REFERENCE PLAN



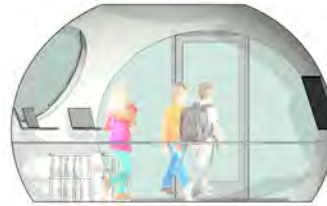
OPEN BREAK-OUT ROOM WITH BALCONY



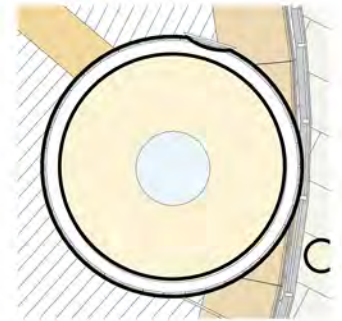
INTERIOR AREA = 205 SF



4TH FLOOR REFERENCE PLAN



MIDDLE SCHOOL 'STUDY BAR'



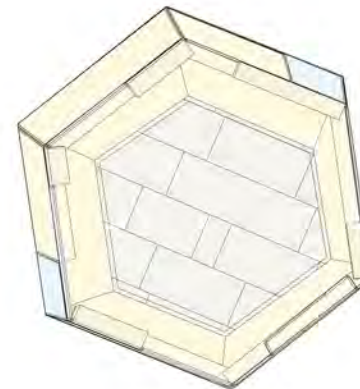
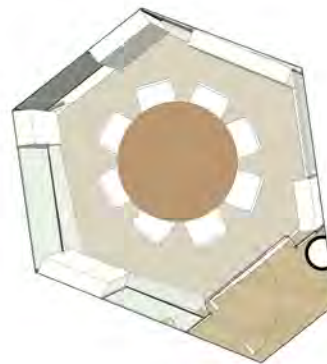
AREA = 115 SF



4TH FLOOR REFERENCE PLAN



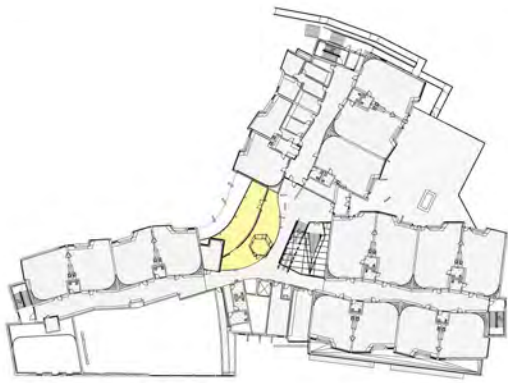
3RD FLOOR REFERENCE PLAN



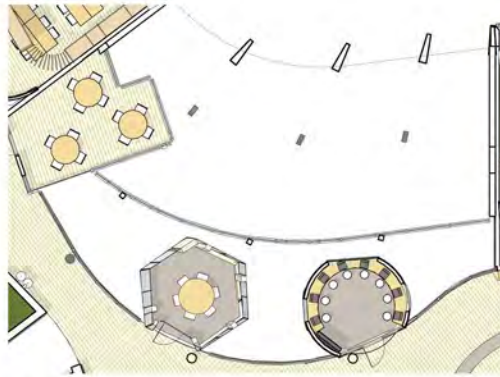
2ND FLOOR REFERENCE PLAN

AREA = 160 SF EACH

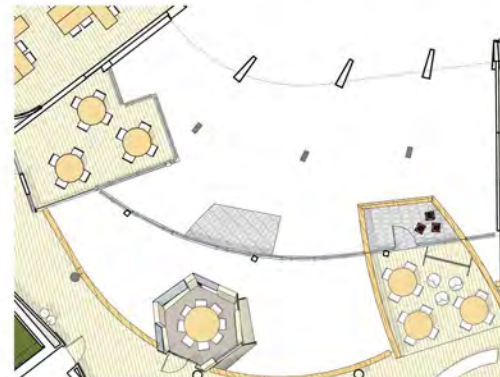
TYPICAL CLOSEABLE BREAKOUT ROOMS
FLOORS 2,3,4



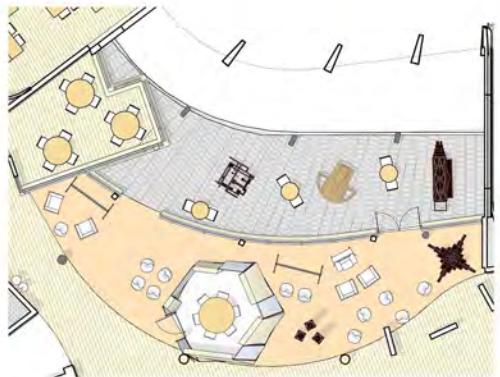
REFERENCE PLAN



4TH FLOOR



3RD FLOOR



2ND FLOOR

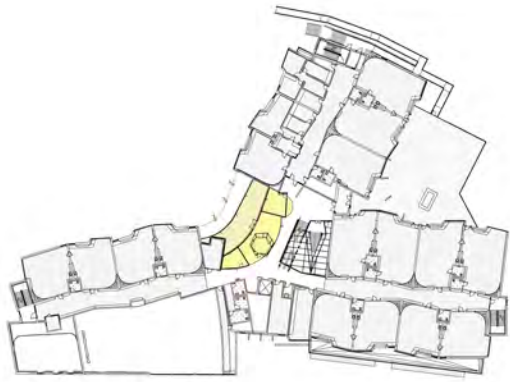


3D VIEW

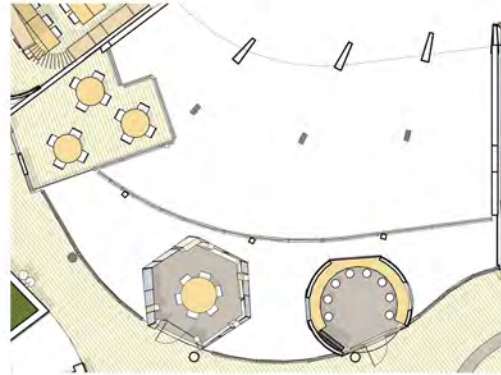


2ND FLOOR COLLABORATION ZONE

PROJECT AREAS
OPTION A



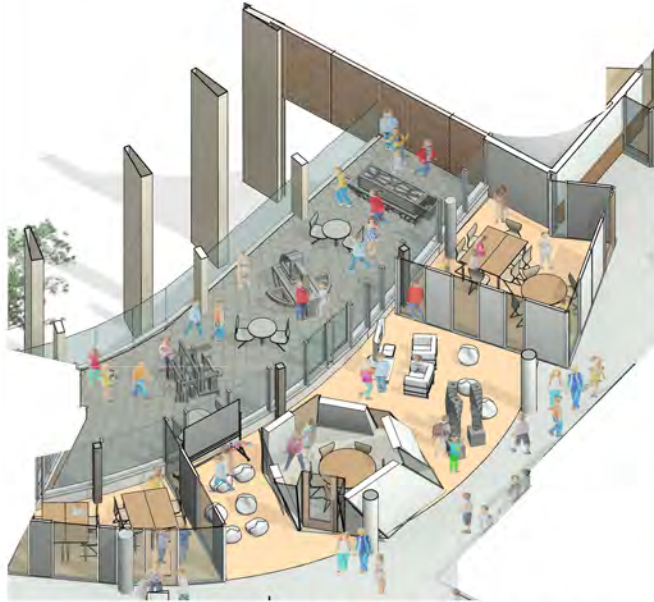
REFERENCE PLAN



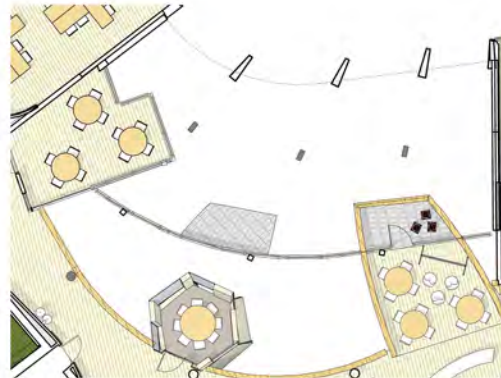
4TH FLOOR



3D VIEW




2ND FLOOR COLLABORATION ZONE



3RD FLOOR

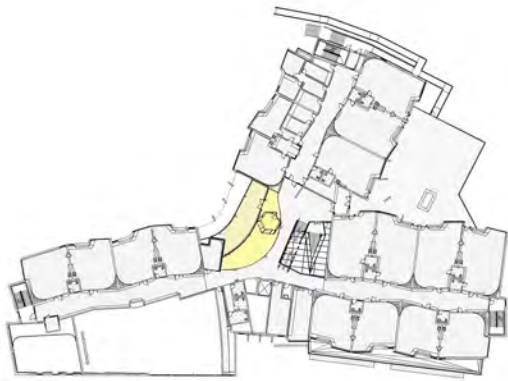
PROJECT AREAS
OPTION B

 Jonathan Levi Architects

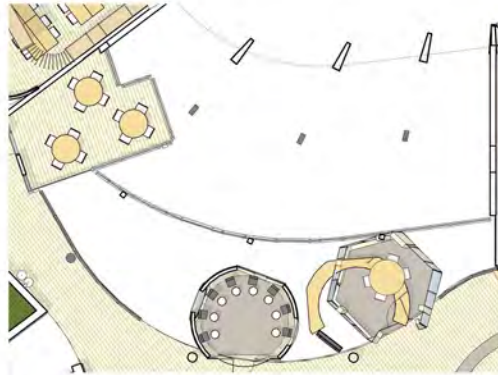


2ND FLOOR

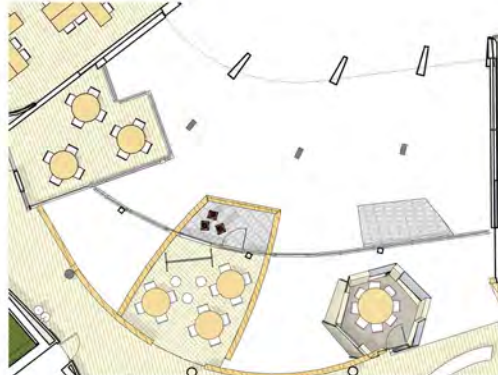
MAY 4, 2020
DESIGN DEVELOPMENT WORKSHOP 6
DRISCOLL SCHOOL



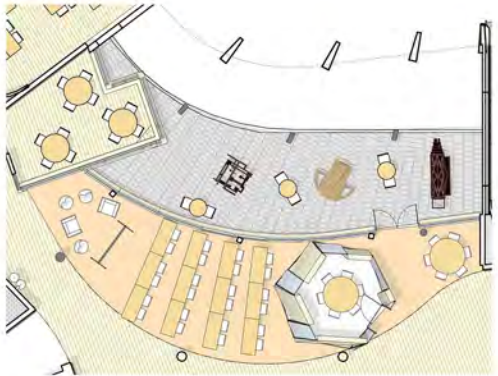
REFERENCE PLAN



4TH FLOOR



3RD FLOOR



2ND FLOOR




2ND FLOOR COLLABORATION ZONE



3D VIEW

PROJECT AREAS
OPTION C

 Jonathan Levi Architects

MAY 4, 2020
DESIGN DEVELOPMENT WORKSHOP 6
DRISCOLL SCHOOL

Agenda

1. Acoustics
2. Balconies & Stairs
3. Project Areas
4. Materials



Materials - Exterior



Typical Cladding



Trim



Typical Storefront Glazing

Materials – Typical Interior



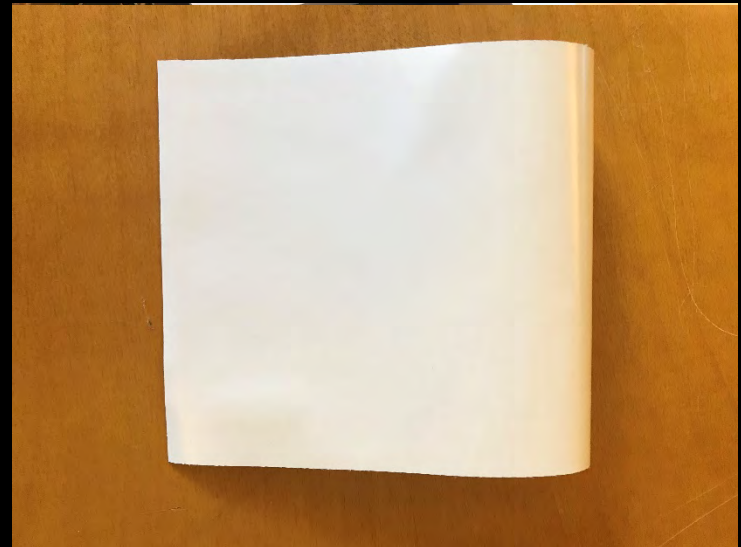
Premium VCT Flooring



Rubber Base



Plastic Laminate Wall Guard with Hardwood Edges



Writeable Magnetic Wall Surfacing



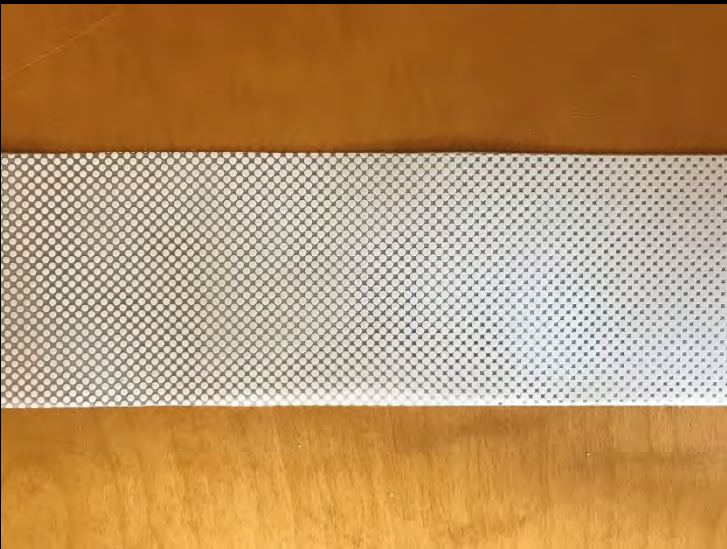
Materials – Typical Interior



Tectum Acoustic Clerestory Paneling



High Performance Acoustic Ceiling Tile



Plastic Laminate Clad Phenolic Lockers

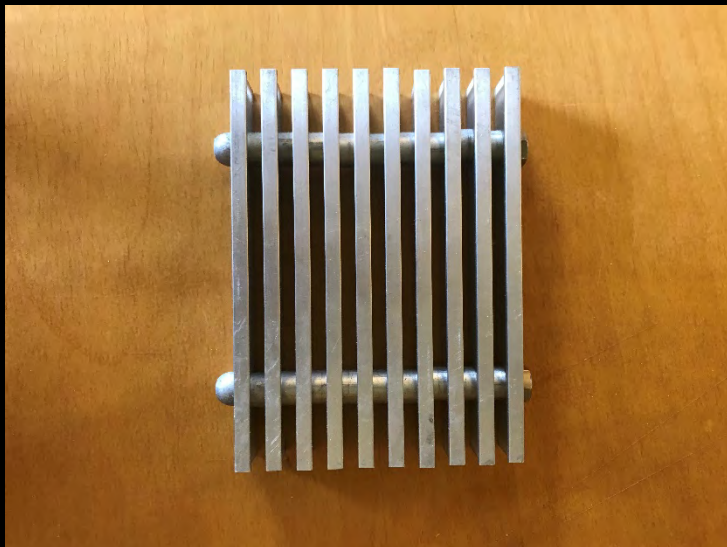
Materials – Special Applications



Polished Colored Concrete Cafeteria Flooring



Quarry Tile Kitchen Flooring



Guardrail Paneling

Materials – Special Applications



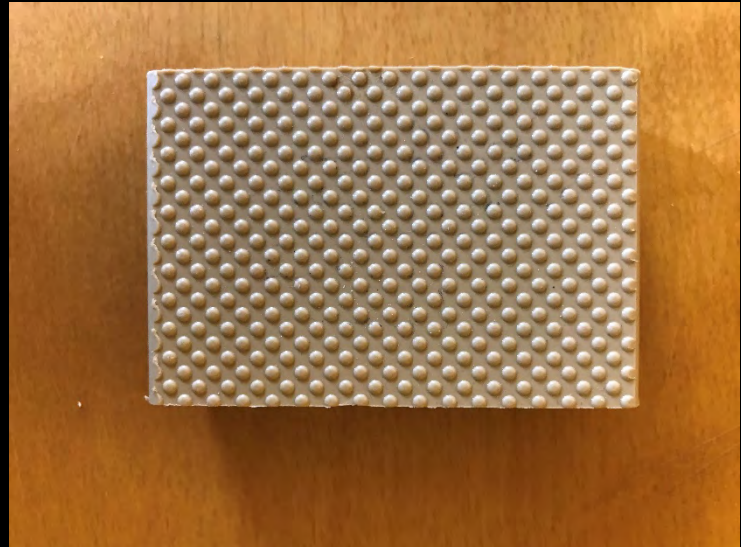
Textured Epoxy Toilet Flooring



Ceramic Tile Toilet Wet Walls



Toilet Sink Counters



Vandal Resistant Toilet Partitions

Materials – Special Applications



Hardwood Gym Flooring and Vented Base



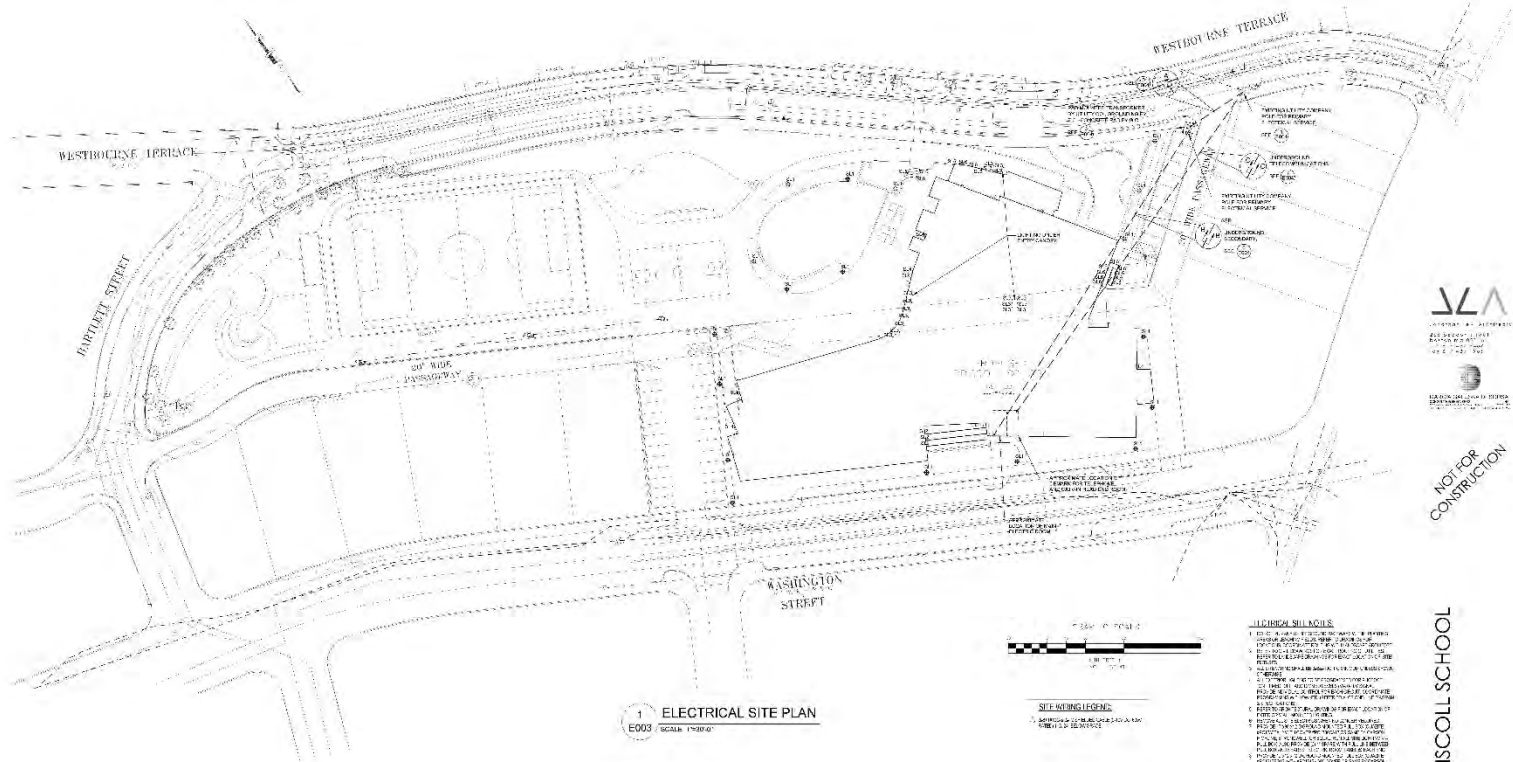
Media Center Carpet



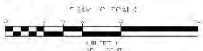
Agenda

1. Acoustics
2. Balconies & Stairs
3. Project Areas
4. Materials
5. Exterior Lighting

Site Lighting



ELECTRICAL SITE PLAN
E003 SCALE: 1/8"=1'-0"



SITE NOTING LEGEND

- 1. LIGHTING FIXTURES
- 2. ELECTRICAL SYMBOLS

LEGEND SYMBOLS

1. LIGHTING FIXTURES
2. ELECTRICAL SYMBOLS
3. ELECTRICAL SYMBOLS
4. ELECTRICAL SYMBOLS
5. ELECTRICAL SYMBOLS
6. ELECTRICAL SYMBOLS
7. ELECTRICAL SYMBOLS
8. ELECTRICAL SYMBOLS
9. ELECTRICAL SYMBOLS
10. ELECTRICAL SYMBOLS
11. ELECTRICAL SYMBOLS
12. ELECTRICAL SYMBOLS
13. ELECTRICAL SYMBOLS
14. ELECTRICAL SYMBOLS
15. ELECTRICAL SYMBOLS
16. ELECTRICAL SYMBOLS
17. ELECTRICAL SYMBOLS
18. ELECTRICAL SYMBOLS
19. ELECTRICAL SYMBOLS
20. ELECTRICAL SYMBOLS



NOT FOR CONSTRUCTION

DRISCOLL SCHOOL



TYPE 'SL1' POLE LIGHT
SCALE: 1/8"



TYPE 'SL2' TAPE LIGHT IN EXTRUDED ENCLOSURE AT LARGE CANOPIES
SCALE: 1/8"



TYPE 'SL3' RECESSED DOWNLIGHT UNDER CANOPIES
SCALE: 1/8"



TYPE 'SL4' WALL SCONCE AT EXTERIOR DOORS WITHOUT CANOPIES
SCALE: 1/8"



TYPE 'SL5' SPOT LIGHT ACCENTING EXTERIOR UNDER CANOPIES
SCALE: 1/8"



TYPE 'SL6' STEP LIGHT AT EXTERIOR WALKWAYS
SCALE: 1/8"

PROJECT NO. 03-00000000
DATE: 03/11/2020
SHEET NO. 03-00000000
PROJECT: DRISCOLL SCHOOL
ELECTRICAL SITE PLAN
E003

Agenda

1. Acoustics
2. Balconies & Stairs
3. Project Areas
4. Materials
5. Exterior Lighting
6. Historical Artifacts

Historical Artifacts Locations

